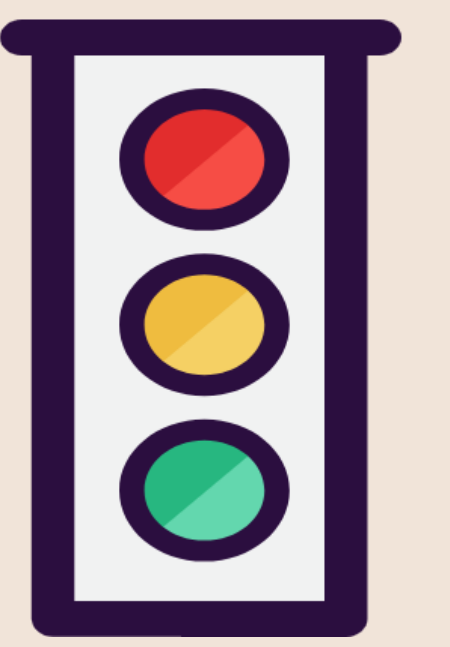
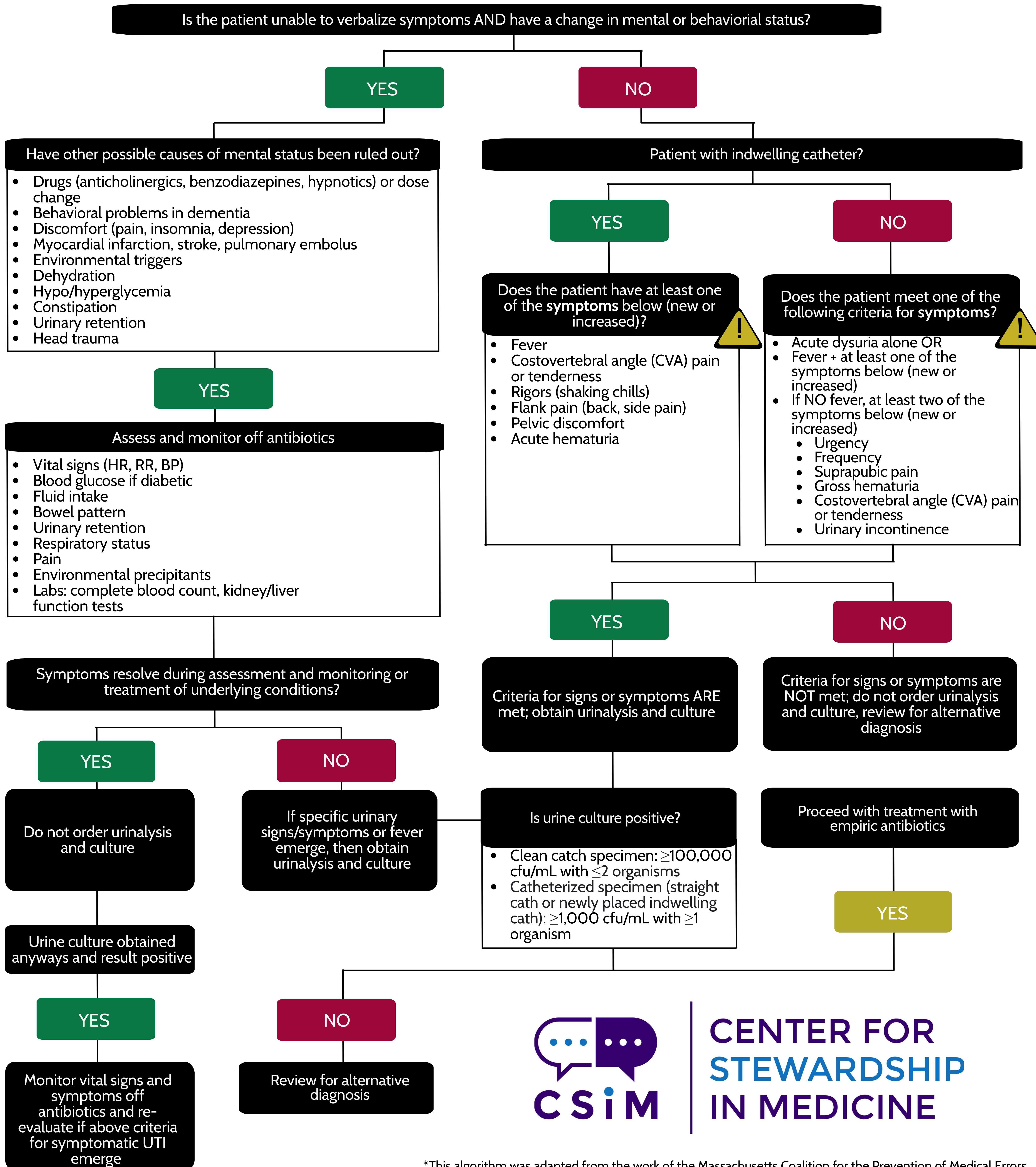


Evaluation and Management of Urinary Tract Infections (UTI) Algorithm



Diagnosis of UTI requires clinical signs and symptoms of UTI and a positive culture.
This algorithm is not intended for patients that meet sepsis criteria.



*This algorithm was adapted from the work of the Massachusetts Coalition for the Prevention of Medical Errors



CENTER FOR STEWARDSHIP IN MEDICINE